



Mayer Fabrics

High Traffic

logiflex



GATSBY
WC978-014 Indigo



WC978-046
Light Grey



WC978-002
Topaz



WC978-053
Aegean



WC978-008
Plum



WC978-000
Mink



WC978-019
Tangelo



WC978-003
Cactus



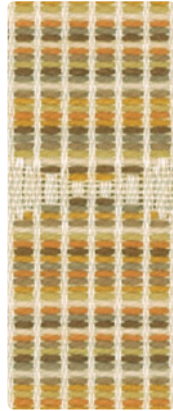
WC978-006
Bitumen



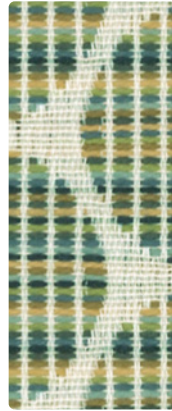
CENTRIC
WC979-004 Denim



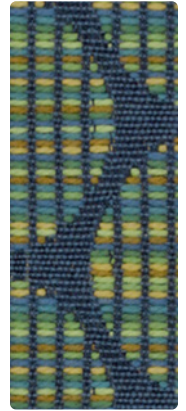
WC979-000
Mocha



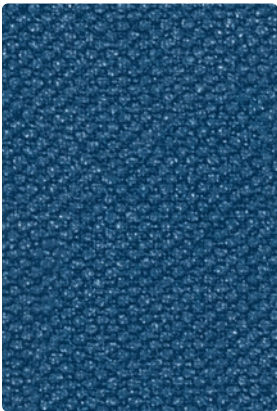
WC979-002
Saffron



WC979-003
Meadow



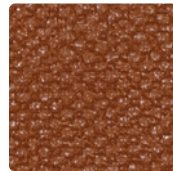
WC979-013
Grotto



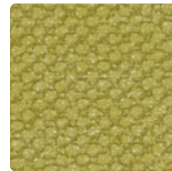
ICON
IC-034 Marine



IC-017
Sand



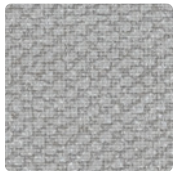
IC-019
Terra



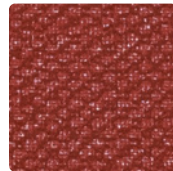
IC-003
Celery



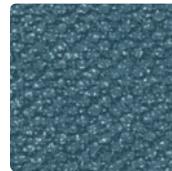
IC-044
Indigo



IC-016
Tin



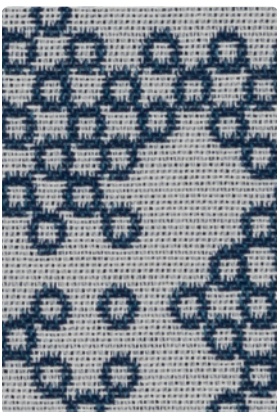
IC-001
Sangria



IC-014
Ocean



IC-036
Steel



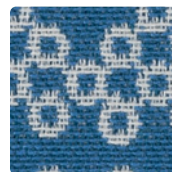
LOOP
637-004 Admiral



637-007
Mineral



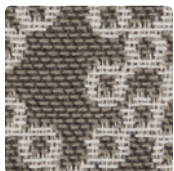
637-009
Tangelo



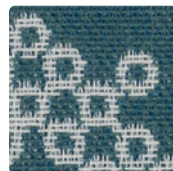
637-024
Marine



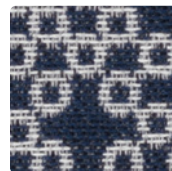
637-006
Smoke



637-000
Driftwood



637-014
Ocean

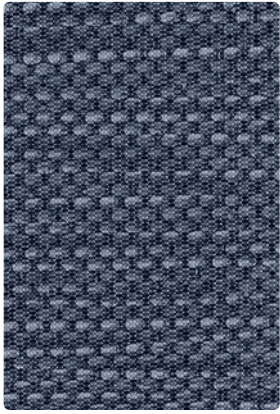


637-044
Indigo



637-016
Shadow

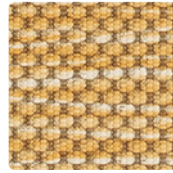
Additional colors are available. Please refer to the Logiflex website.



MIDWAY
MW-004 Indigo



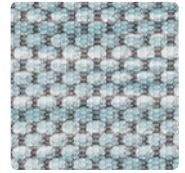
MW-017
Sand



MW-002
Sunshine



MW-003
Moss



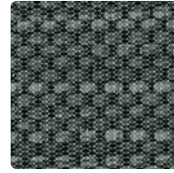
MW-023
Spa



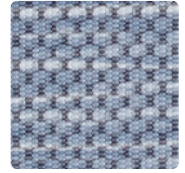
MW-000
Stone



MW-009
Copper



MW-013
Algae



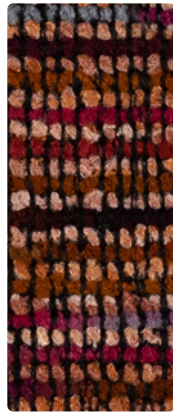
MW-014
Skylight



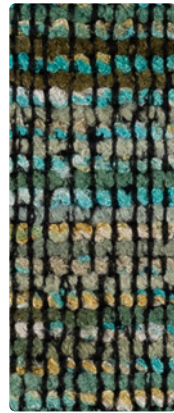
CURATOR
WC921-004 Ink



WC921-006
Cloud



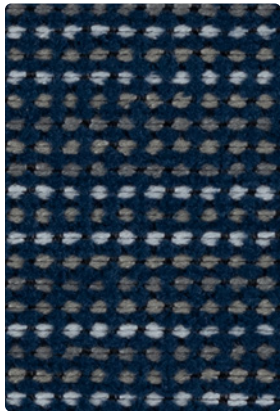
WC921-008
Rhubarb



WC921-013
Juniper



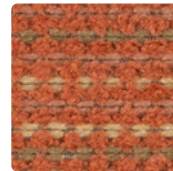
WC921-016
Metal



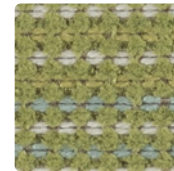
CASPIAN
329-004 Ink



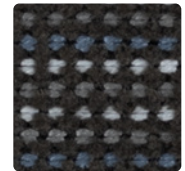
329-007
Almond



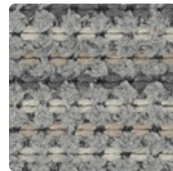
329-009
Tangelo



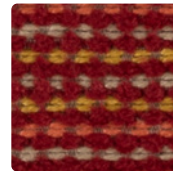
329-003
Spring



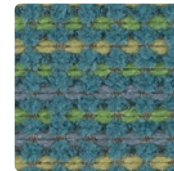
329-016
Cinder



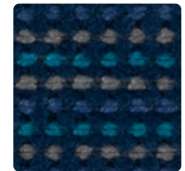
329-006
Mineral



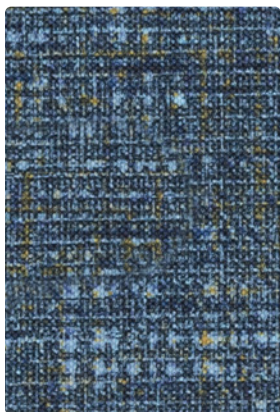
329-011
Sunset



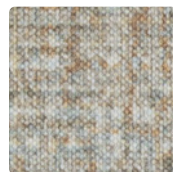
329-013
Jungle



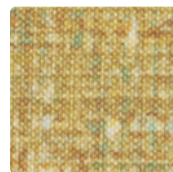
329-024
Marine



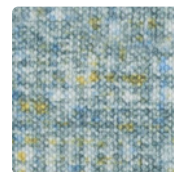
BELMONT
BL-024 Tidal



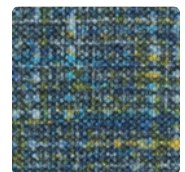
BL-017
Dune



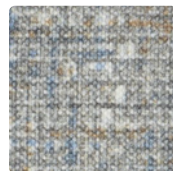
BL-002
Citrus



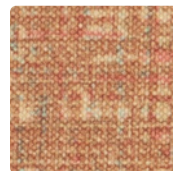
BL-004
Opal



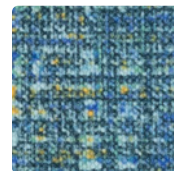
BL-003
Raintree



BL-016
Stone



BL-009
Clementine

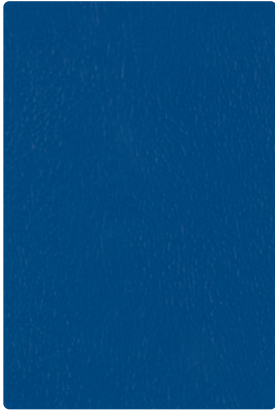


BL-014
Reef



BL-000
Gravel

Additional colors are available. Please refer to the Logiflex website.



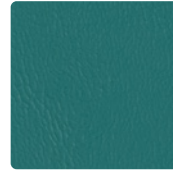
SPARTAN
SN-034 Cobalt



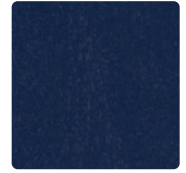
SN-016
Flint



SN-002
Lemon



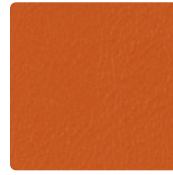
SN-003
Reef



SN-044
Deep Sea



SN-046
Granite



SN-009
Tangerine

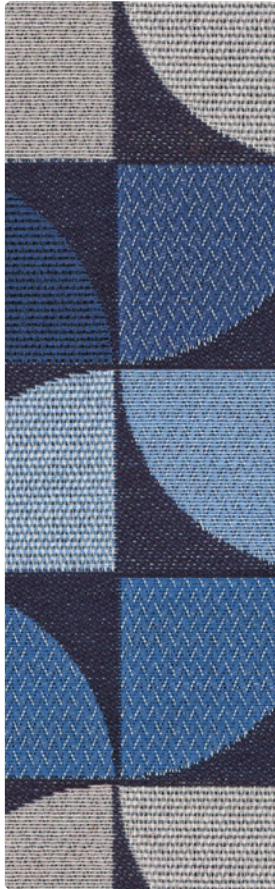


SN-011
Sangria

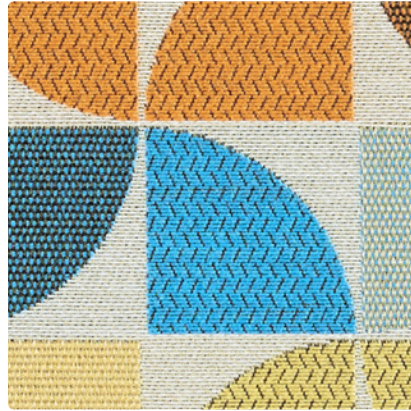


SN-008
Grape

FANFARE Shown at approximately 75% Scale



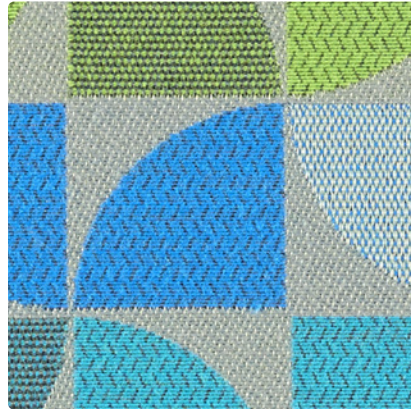
FANFARE
WC965-014 Denim



WC965-009
Fiesta



WC965-015
Plum



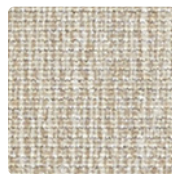
WC965-004
Seabreeze



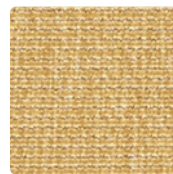
WC965-013
Meadow



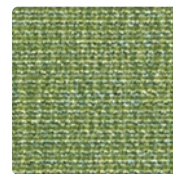
ESSENCE
ES-004 Ink



ES-017
Stone



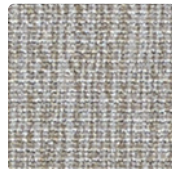
ES-002
Sunray



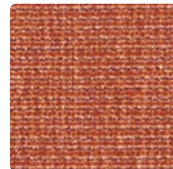
ES-003
Hedge



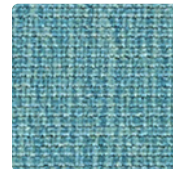
ES-010
Truffle



ES-016
Metal



ES-009
Persimmon

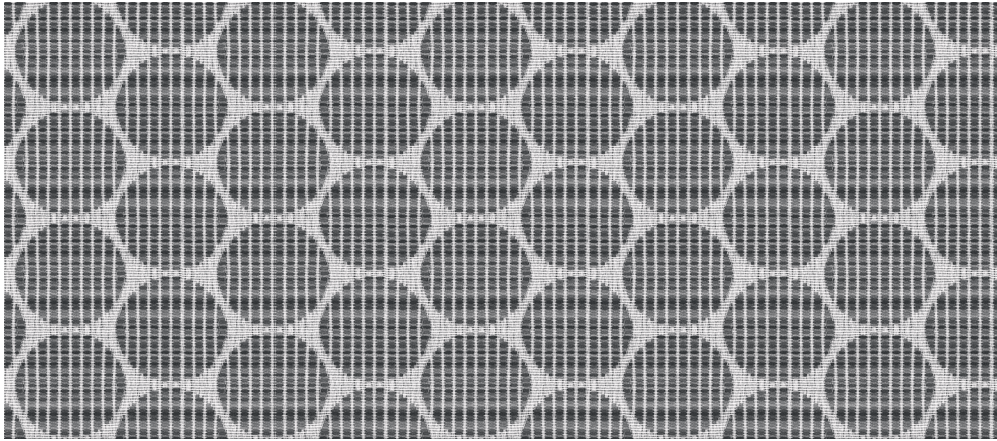


ES-023
Sea

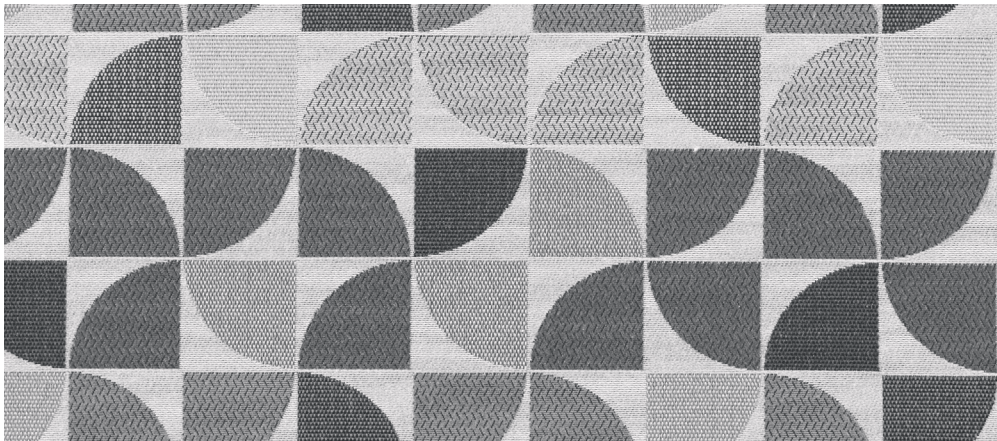


ES-006
Charcoal

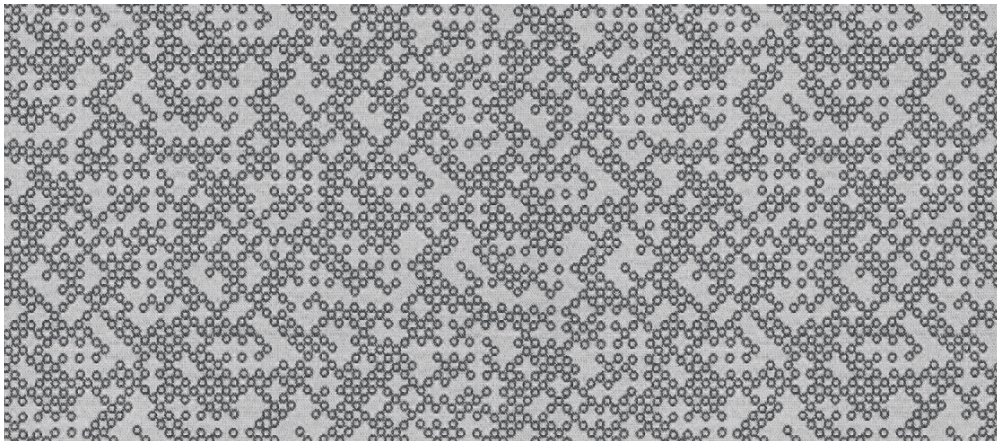
Additional colors are available. Please refer to the Logiflex website.



CENTRIC



FANFARE



LOOP

TECHNICAL INFORMATION

Pattern 54"	Content and Backing	Certifications	Weight/ Linear Yd.	Pattern Repeat	Finish	Abrasion Wyzenbeek	Light- Fastness	Flammability	Cleaning Code
BELMONT <i>Directional</i>	80% Vinyl - Phthalate Free face, 20% Polyester backing	GREENGUARD	29 oz.	None	Soil & Stain Resistant Top Coat with Ink Resistant Technology	250,000 [^] Double Rubs	200 hours	Cal. 117-2013 NFPA 260/UFAC Class 1 FMVSS 302	WS, BC, CFC
CASPIAN <i>Directional</i>	76% Polyester, 24% SEAQUAL® YARN (Post-Consumer Recycled Polyester) Backing: Acrylic	GREENGUARD Gold	17.89 oz.	0.125" H, 2.5" V	Stain Repellent - PFAS Free	80,000 [^] Double Rubs	40 hours	Cal. 117-2013 NFPA 260/UFAC Class 1	WS, BC
CENTRIC <i>Directional</i>	81% Polyester, 19% Post- Consumer Recycled Polyester Backing: Crypton®	GREENGUARD Gold	23.216 oz.	2.5" H, 1.375" V	Crypton® with Antimicrobial Silver Ion Technology	102,000 [^] Double Rubs	40 hours	Cal. 117-2013 NFPA 260/UFAC Class 1	W, C, BC
CURATOR <i>Directional</i>	100% Polyester Backing: Crypton®	GREENGUARD Gold	18.6 oz.	Random Match	Crypton® with Antimicrobial Silver Ion Technology	100,000 [^] Double Rubs	40 hours	Cal. 117-2013 NFPA 260/UFAC Class 1	W, C, BC
ESSENCE <i>Directional</i>	80% Vinyl - Phthalate Free face, 20% Polyester backing	GREENGUARD	30 oz.	None	Soil & Stain Resistant Top Coat with Ink Res- istant Technology	250,000 [^] Double Rubs	200 hours	Cal. 117-2013 NFPA 260/UFAC Class 1	WS, BC, CFC
FANFARE <i>Directional</i>	100% Post-Consumer Recycled Polyester Backing: Crypton® Green	GREENGUARD Gold	19.328 oz.	14.938" H, 5.875" V	Crypton® Green with Antimicrobial Silver Ion Technology	75,000 [^] Double Rubs	40 hours	Cal. 117-2013 NFPA 260/UFAC Class 1	C, BC
GATSBY <i>Directional</i>	100% Polyester Backing: Crypton®	GREENGUARD Gold	24.3 oz.	None	Crypton® with Antimi- crobial Silver Ion Technology	100,000 [^] Double Rubs	40 hours	Cal. 117-2013 NFPA 260/UFAC Class 1	C, BC
ICON <i>Directional</i>	80% Vinyl - Phthalate Free face, 20% Polyester backing	GREENGUARD	31 oz.	None	Soil & Stain Resistant Top Coat with Ink Res- istant Technology	1,000,000 [^] Double Rubs	300 hours	Cal. 117-2013 NFPA 260/UFAC Class 1	WS, BC, CFC
LOOP <i>Directional</i>	100% Post-Consumer Recycled Polyester Backing: Acrylic	GREENGUARD Gold	13.488 oz.	14.5" H, 7.375" V	Stain Repellent - PFAS Free	80,000 [^] Double Rubs	40 hours	Cal. 117-2013 NFPA 260/UFAC Class 1	WS, BC
MIDWAY <i>Directional</i>	80% Vinyl - Phthalate Free face, 20% Polyester backing	GREENGUARD	28 oz.	18" H, 18" V Non-Match- ing	Soil & Stain Resistant Top Coat with Ink Resistant Technology	1,300,000 [^] Double Rubs	650 hours	Cal. 117-2013 NFPA 260/UFAC Class 1 BIFMA	W, BC, CFC
SPARTAN <i>Indoor/Outdoor</i>	80% Vinyl - Phthalate Free face, 20% Polyester backing	GREENGUARD	32 oz.	None	Soil & Stain Resistant Top Coat	175,000 [^] Double Rubs	1000 hours	Cal. 117-2013 NFPA 260/UFAC Class 1 FMVSS 302	WS, BC, CFC

REDUCED ENVIRONMENTAL IMPACT

These products are GREENGUARD or GREENGUARD Gold Certified for low chemical and particle emissions to UL standard UL 2818 and may contribute to LEED certification.

No FR Additives No Antibacterial/Antimicrobial Additives
PFAS Free Belmont, Essence, Icon, Loop, Midway

CARE AND CLEANING INFORMATION

W: Water-Based Cleaner WS: Water/Solvent Cleaner

C: Crypton Cleaning CFC: Coated Fabrics Cleaning – Refer to Mayer website for complete cleaning info.

BC: Bleach Cleanable – 1 part bleach, 9 parts water = 10% bleach, 90% water solution. Do not clean/disinfect fabric for longer than 10 minutes using the 10% bleach solution. Always rinse promptly with clean water after applying the bleach solution. Failure to do so will void any and all warranties.

DYE TRANSFER DISCLAIMER

Certain clothing and accessory dyes (such as those used on denim jeans) may migrate to lighter colors. This phenomenon is increased by humidity and temperature and is irreversible. Mayer Fabrics will not assume responsibility for dye transfer caused by external contaminants. Please check compatibility when using this product in combination with painted or varnished surfaces.

ADDITIONAL INFORMATION

[^]Abrasion test results exceeding ACT Performance Guidelines are not an indicator of product lifespan. Multiple factors affect fabric durability and appearance retention.

*A multi-use fabric that can be used for upholstery, panels, wrapped walls, and acoustic.

Warranty: Please refer to the Mayer website for warranty information by pattern.

Custom Colors: All patterns can be custom colored. Minimum yardage applies.

Digital Swatch Card Color Matching: Due to color variations on different monitors and color printers, actual swatch colors may vary slightly. Please request a memo sample from Mayer Fabrics to ensure proper color representation.

Complete and current product information available at mayerfabrics.com.



These fabrics meet or exceed these ACT performance guidelines.
*Certification Marks owned by ACT®

LGFECD MF1123

logiflex

T 877.864.9323

logiflex.ca

MAYER FABRICS

T 800.428.4415 mayerfabrics.com
500 S. Kitley Ave. Indianapolis, IN 46219