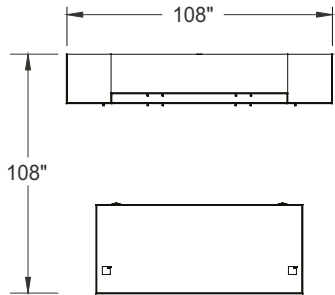


# Typical Layouts



## manhattan-c003-fb



Laminate: Driftwood  
 Metal: Satin Nickel  
 Handles: HJA  
 Fabric: Momentum - Infinity Vanilla

**Note:** Fabrics are specified for informational purpose only and may be of different grades. Typical pricing is based on grade 2 fabric.

| ITEM | QTY | CODE                | DESCRIPTION  | LIST PRICE \$          | TOTAL \$ |
|------|-----|---------------------|--|------------------------|----------|
| A    | 1   | MA E 3684 E MID GLR | Desk 36" x 84" x 29"H with E pedestal on left and right - Minister front modesty | 2 849                  | 2 849    |
|      | 2   | [CAPF]              | Option - CAPF grommet  | 26                     | 52       |
| B    | 1   | MA 201884 VL        | Wardrobe 20" x 18" x 84"H with one door on left                                  | 1 122                  | 1 122    |
| C    | 1   | MA 2072 ARAR        | Combination credenza 20" x 72" x 29"H with 2 cabinets                            | 1 832                  | 1 832    |
| D    | 1   | MA 201884 ARR       | Cabinet 20" x 18" x 84"H with one door on right                                  | 1 238                  | 1 238    |
| E    | 1   | MA 1672 HPA 55 LR   | Hutch 16" x 72" x 55"H with doors  | 2 537                  | 2 537    |
|      | 2   | [LSKN]              | Option - Lock  | 44                     | 88       |
|      | 4   | [HJA]               | Option - HJA handles   | 14                     | 56       |
|      | 1   | [TB]                | Option - Fabric tackboard for hutch - Grade 2                                    | 519                    | 519      |
|      |     |                     |  | Total:                 | 10 293   |
|      |     |                     |  | Total without options: | 9 578    |