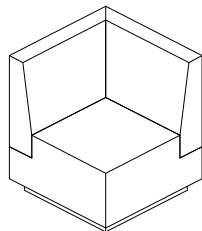


# INSTRUCTIONS D'ASSEMBLAGE

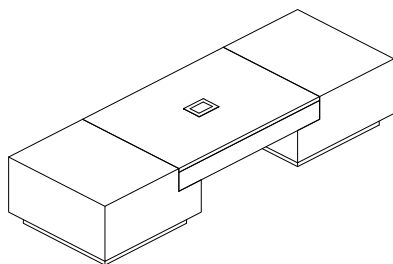
## ASSEMBLY INSTRUCTIONS

logiflex

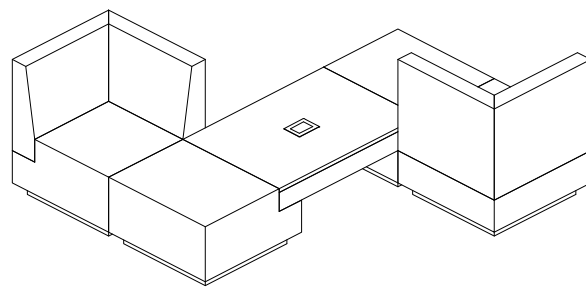
Exemple sans panneau intimité / Example without privacy panel



*Banc d'angle*  
*Corner bench*  
*SIT CBM*  
*(2x)*



*Table d'appoint*  
*Occasional table*  
*SIT 38 BFT*  
*(1x)*

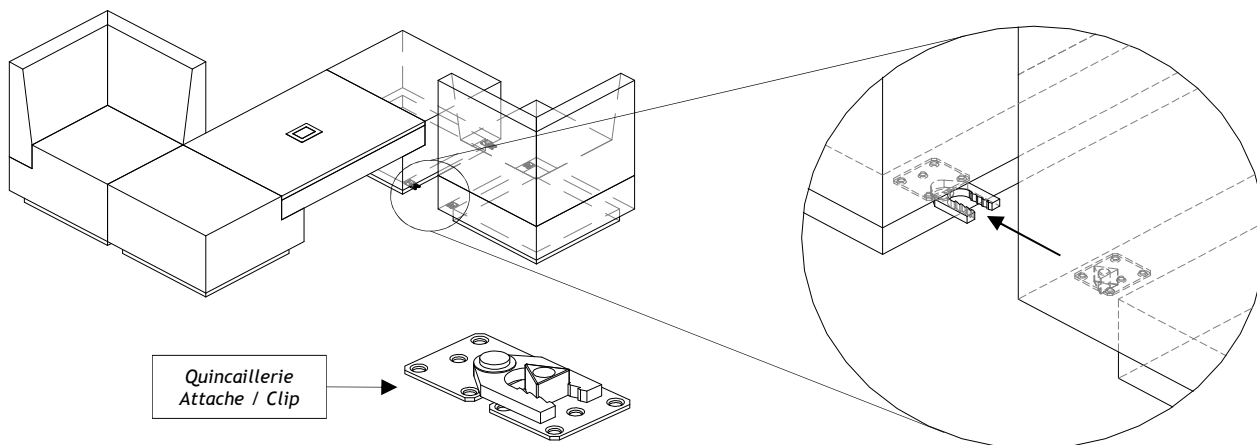


*Configuration*  
*SIT-TYP-G*  
*(Liste de prix / Fauteuils - page 40)*  
*(Price list / Softseating - page 40)*

### Notes générales / General notes

Tous les modules sont pré-assemblés en usine, la quincaillerie est installée selon la configuration spécifiée par le client.

All modules are pre-assembled in factory, hardware is installed according to layout configuration.



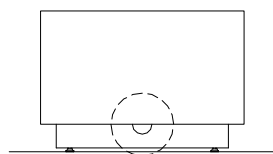
*Quincaillerie*  
*Attache / Clip*

### Gestion du filage / Wiring management

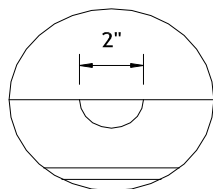
Tous les coup-de-pied sont usinés sur les quatre côtés afin de permettre le passage du câblage d'un module à l'autre.

All kick plates are machine-cut on all four sides for feeding cables from one module to the next.

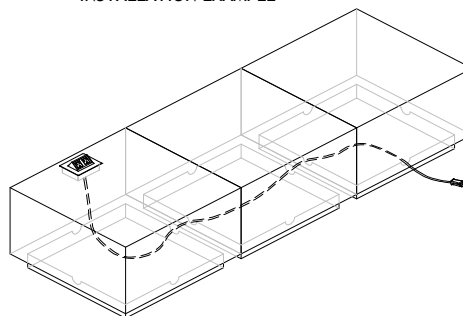
*VUE DE PROFIL*  
*SIDE VIEW*



*DÉTAIL AGRANDI*  
*CLOSE-UP*



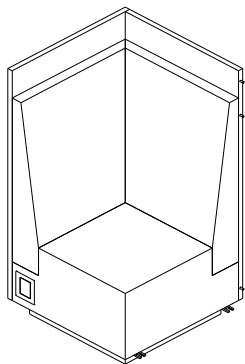
*EXEMPLE D'APPLICATION*  
*INSTALLATION EXAMPLE*



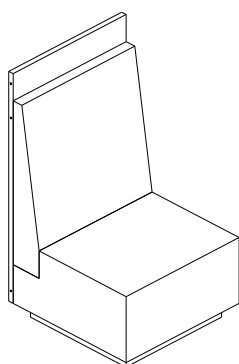
**Banc avec panneau intimité / Bench with privacy panel**

Pour l'installation des modules reconfigurable "Sit", équipés de panneaux intimités

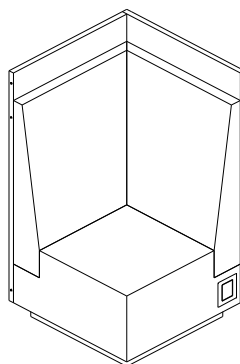
For installation of reconfigurable "SIT" modules, equipped with privacy panel

**Exemple avec panneau / Example with panel**

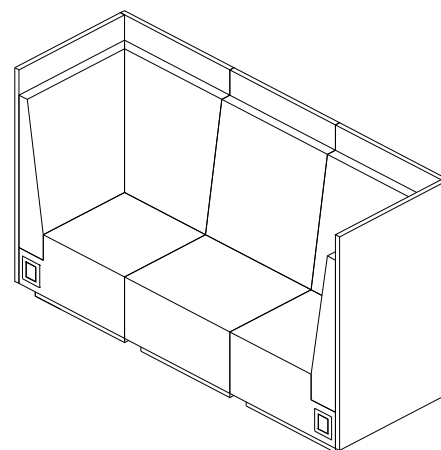
*Banc d'angle*  
Corner bench  
SIT CBH P R L  
(1x)



*Banc avec dossier*  
Bench  
SIT BH P LR  
(1x)



*Banc d'angle*  
Corner bench  
SIT CBH P L R  
(1x)



*Configuration*  
SIT-TYP-A  
(Liste de prix / Fauteuils - page 37)  
(Price list / Softseating - page 37)

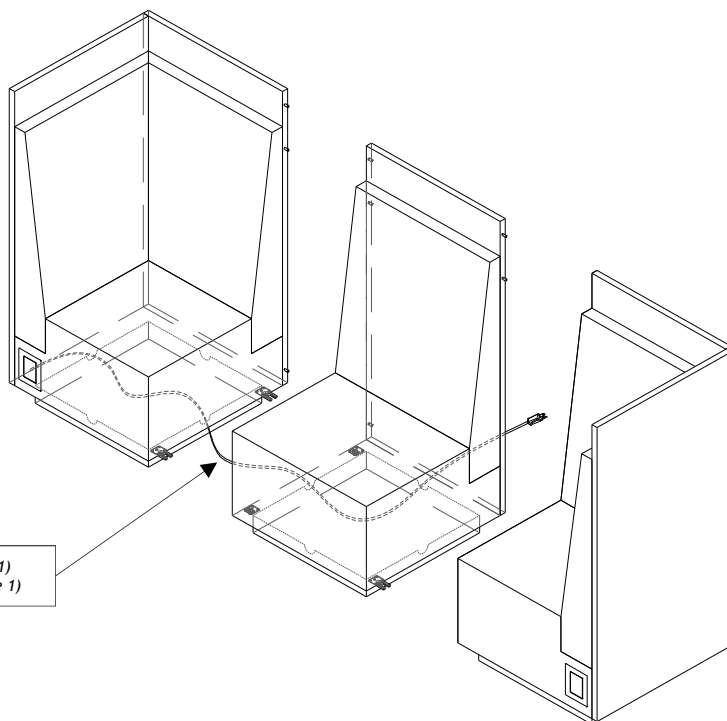
# 1.

**Préparation pour assemblage****Preparation for assembly****1.1 Aligner les modules selon la configuration**

Align modules according to the configuration

**1.2 Gestion du filage (voir page1)**

Wiring management (see page 1)



Gestion du filage (voir page1)  
Wiring management (see page 1)

# 2. Assemblage

## 2.1 Assembler deux modules à la fois.

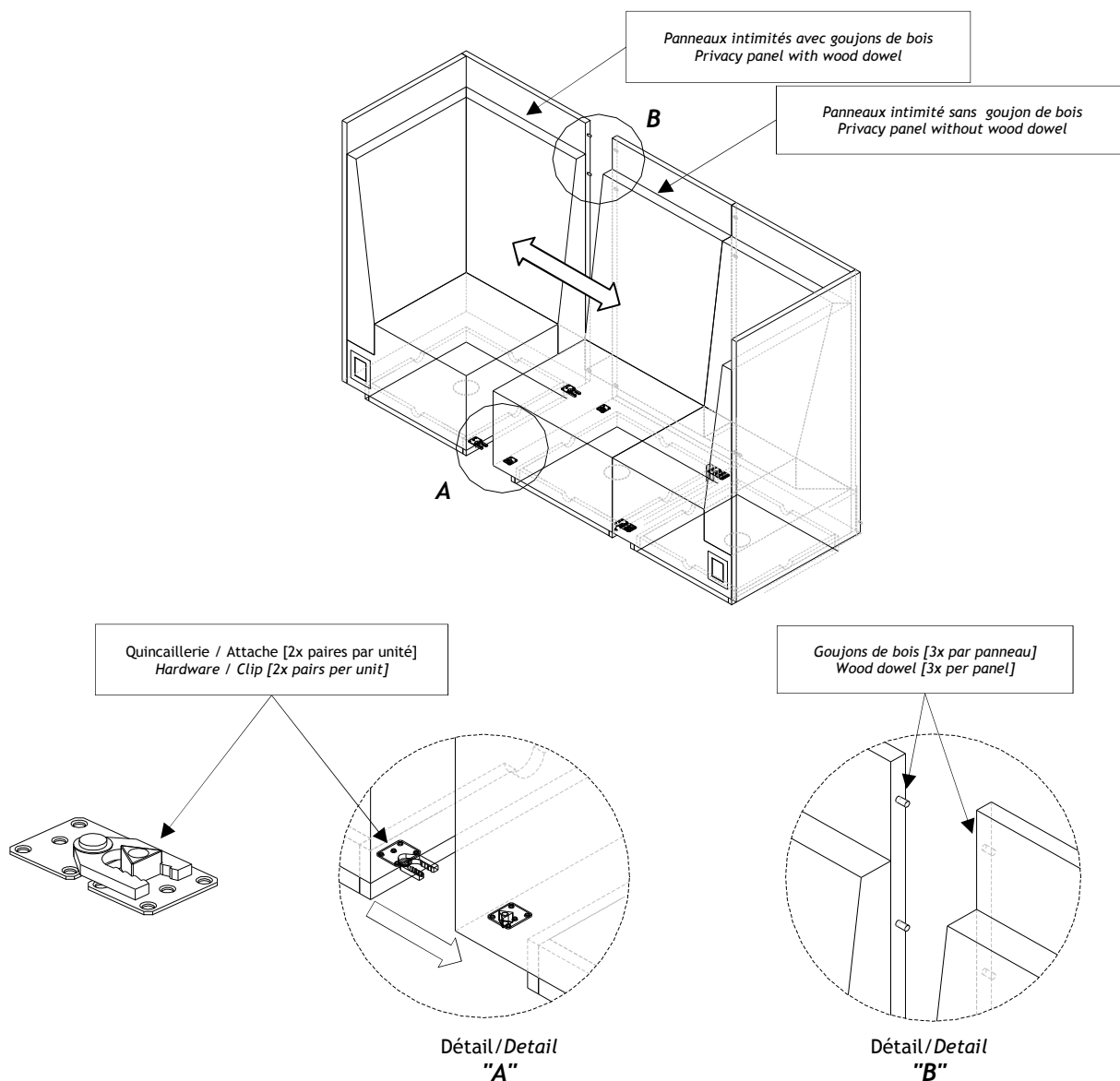
*Assemble two modules at a time.*

## 2.2 Rapprocher les deux modules et assembler les attaches du coup de pied (détail "A") et les goujons des panneaux intimité (détail "B").

*Bring the two modules closer together and assemble the clips between kick plate (detail "A") and the wooder dowels in privacy panel (detail "B").*

## 2.3 Répéter l'opération pour chaque unité.

*Repeat operation for each unit.*



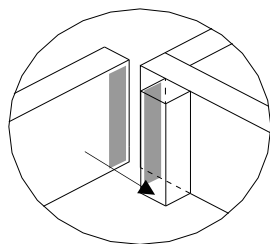
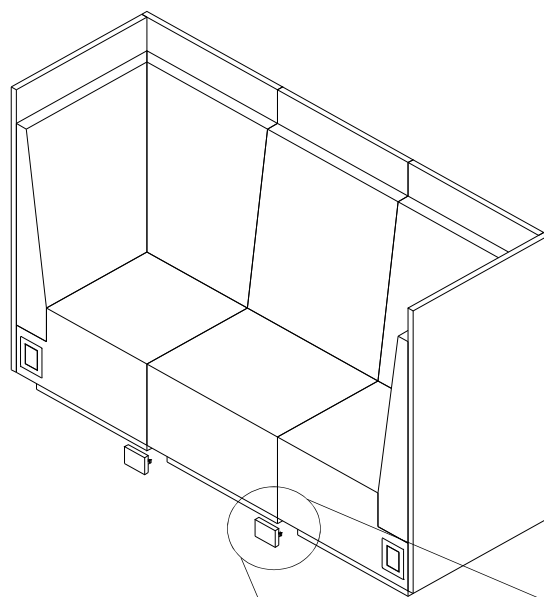
# 3.

Étape finale  
*Final step*

3.1 Ajuster les niveleurs  
*Ajust levellers*

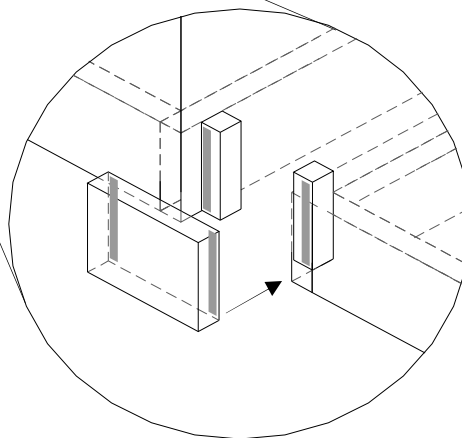
**OPTION (\$)** Installation des "Filler", si applicable

3.2 Install "Filler", if applicable



**OPTION (\$)**  
Raccord amovible pour jonction entre  
les coup-de-pied;

*Removeable joint for junctions  
between kick plates*



Détail/Detail  
"C"  
( Filler )